



Southern Illinois Cancer Report

Healthy Southern Seven Region (HS7RC) Coalition Lung Cancer Facts

The Healthy Southern Illinois Delta Network (HSIDN) serves as a catalyst for improving the health and quality of life in southern Illinois. The HSIDN consists of seven community coalitions directed by a steering committee representing the seven health departments in the lower 16 counties in Illinois. The HS7RC is one of these coalitions consisting of the southernmost seven counties in Illinois. Occurrence and death rates from lung cancer are higher in southern Illinois compared to other parts of the state. The HSIDN is a collaborative effort to improve health and lower the lung cancer death rate.

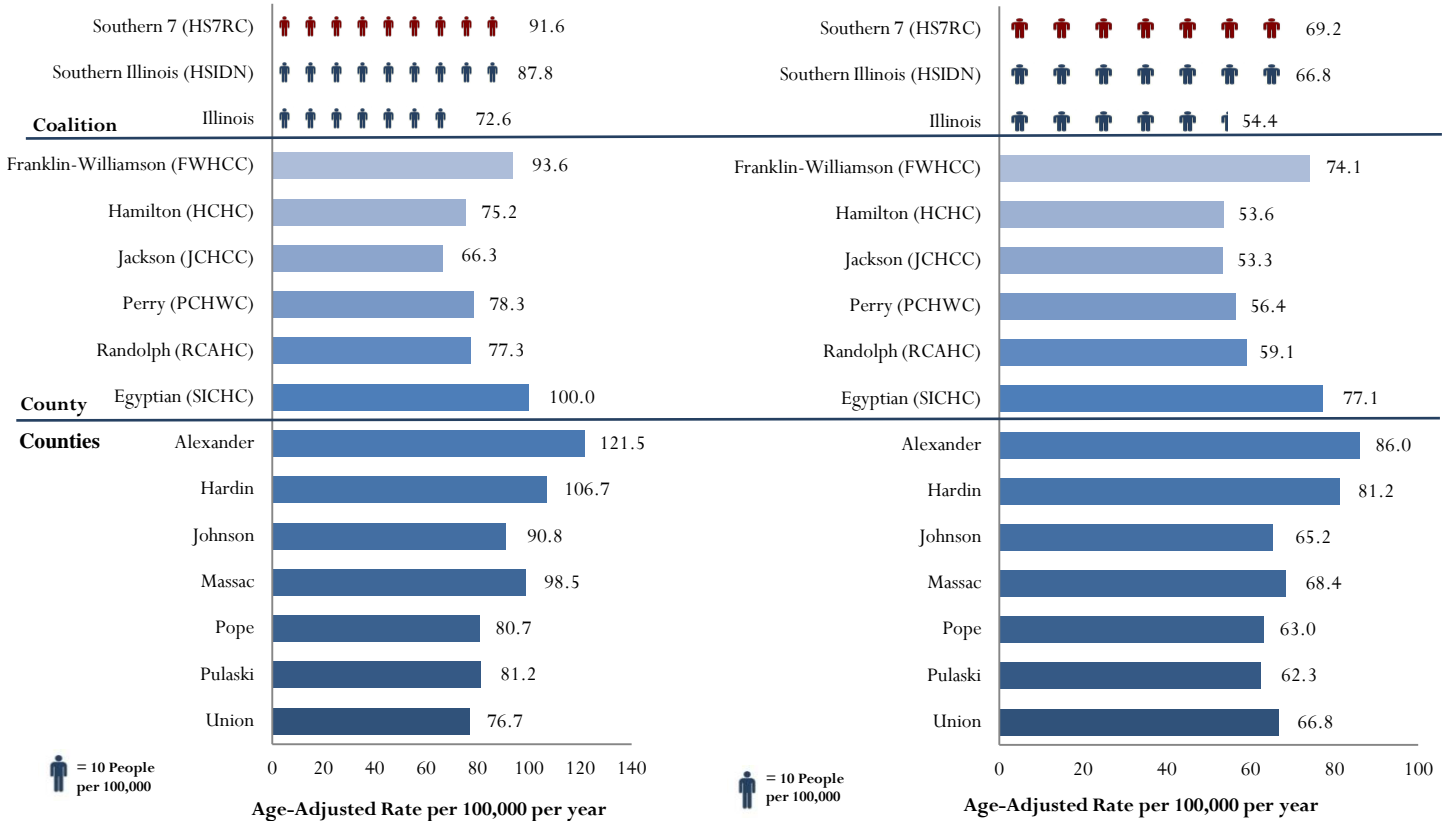


Lung Cancer Occurrence and Death Rates

In 2013, 90 new lung cancer cases are anticipated in the seven counties comprising the Healthy Southern Seven Region (HS7RC) coalition.

Lung Cancer Occurrence 2000-2009

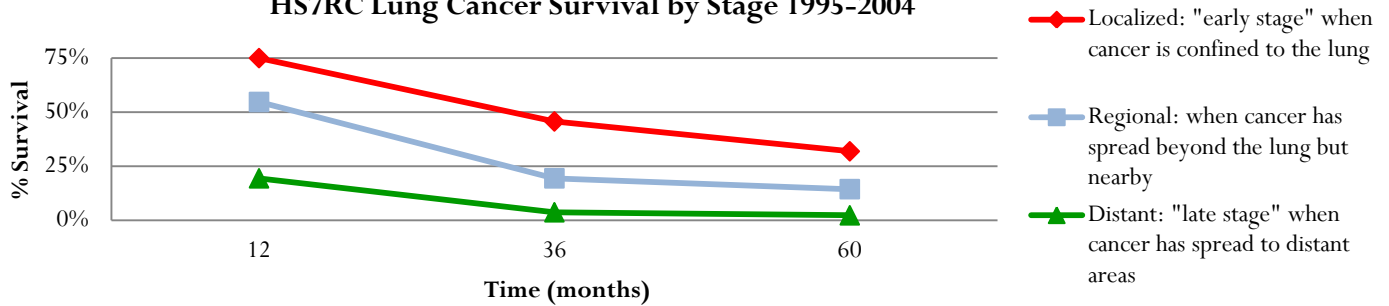
Lung Cancer Death Rate 1999-2009



- ◆ As a whole, lung cancer occurrence has increased for the HS7RC and the HSIDN.
- ◆ More men are diagnosed with lung cancer than women.
- ◆ Lung cancer occurs 40% more often in men living in the HS7RC area than in Illinois men overall (129.3 per 100,000 men per year in HS7RC; 92.6 per 100,000 men per year in Illinois).
- ◆ Lung cancer accounts for 30% of all cancer deaths, more than prostate and colon cancer combined in men, and more than breast cancer in women.
- ◆ If the HS7RC mortality rate was the same as Illinois, then they would have experienced 25 fewer deaths from lung cancer per year.

Early Diagnosis of Lung Cancer

HS7RC Lung Cancer Survival by Stage 1995-2004



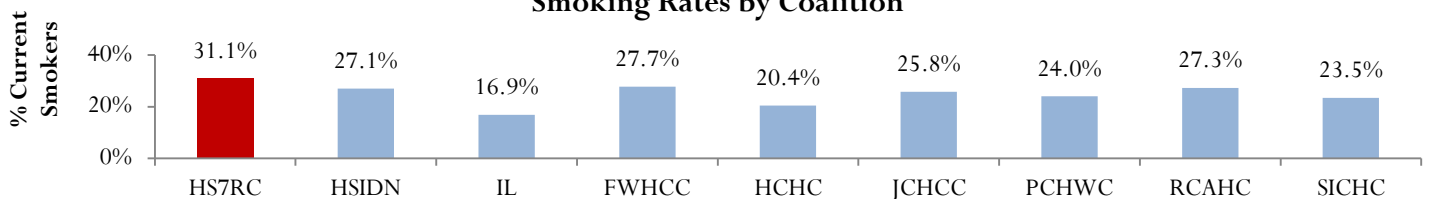
- ◆ Eighteen percent (18%) of lung cancer cases are diagnosed at early stage, when treatment is most likely to be successful (3 out of 4 people survive at least 1 year).
- ◆ Fifty percent (50%) of lung cancer cases are diagnosed at late stage, when only 1 out of 5 people survive at least 1 year.

Demographics and Lung Cancer Risk Factors

| County/Coalition (Population) | Medicare | Medicaid | Uninsured | Poverty | Smoking | Patients: Primary Care Physician |
|-------------------------------|--------------|--------------|--------------|--------------|--------------|----------------------------------|
| Alexander (8,238) | 16.6% | 49.4% | 8.0% | 31.3% | 37.1% | 4,114:1 |
| Hardin (4,320) | 19.0% | 31.1% | 15.0% | 20.4% | ~ | 1,437:1 |
| Johnson (12,582) | 14.4% | 20.0% | 16.0% | 15.4% | 21.7% | 4,204:1 |
| Massac (15,429) | 17.5% | 29.5% | 11.0% | 18.8% | 38.7% | 5,146:1 |
| Pope (4,470) | 19.3% | 21.4% | 18.0% | 19.5% | 17.9% | ~ |
| Pulaski (6,161) | 17.8% | 39.8% | 13.0% | 22.4% | 37.2% | ~ |
| Union (17,808) | 16.7% | 28.7% | 13.0% | 19.8% | 18.4% | 1,481:1 |
| HS7RC (69,008) | 16.8% | 30.3% | 13.1% | 19.6% | 31.1% | 3,276:1 |
| HSIDN (344,594) | 15.7% | 25.8% | 14.0% | 19.9% | 27.1% | 2,518:1 |
| Illinois (12,830,632) | 13.0% | 17.0% | 15.0% | 14.9% | 16.9% | 1,292:1 |

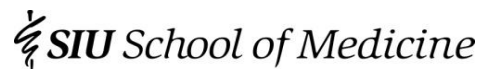
~ values cannot be displayed; * Excluding one or multiple counties

Smoking Rates by Coalition



- ◆ HS7RC coalition has 3,267 patients per primary care physician (PCP), which is much higher than the HSIDN (2518:1) and Illinois (1292:1).
- ◆ Nationally, 80 - 90% of lung cancer cases are related to smoking.^a
- ◆ HS7RC has the highest smoking rate compared to other coalitions in the HSIDN and is 84% higher than the smoking rate for Illinois (16.9).

HSIDN region has a higher occurrence of lung cancer, and people are more likely to die from lung cancer. The rate of lung cancer in the HSIDN has increased whereas the state as a whole has remained constant.



Note: Data was retrieved from IDPH, BRFSS, Census Bureau, County Health Rankings, and Community Health Indicators (CHSI)
^aAmerican Cancer Society: <http://www.cancer.org/acs/groups/content/documents/document/acspc-030080.pdf>